

TAVELLONE IN/OUT

Gres porcellanato
Porcelain stoneware



NATURALE NATURAL
15,3x31 6"x12"

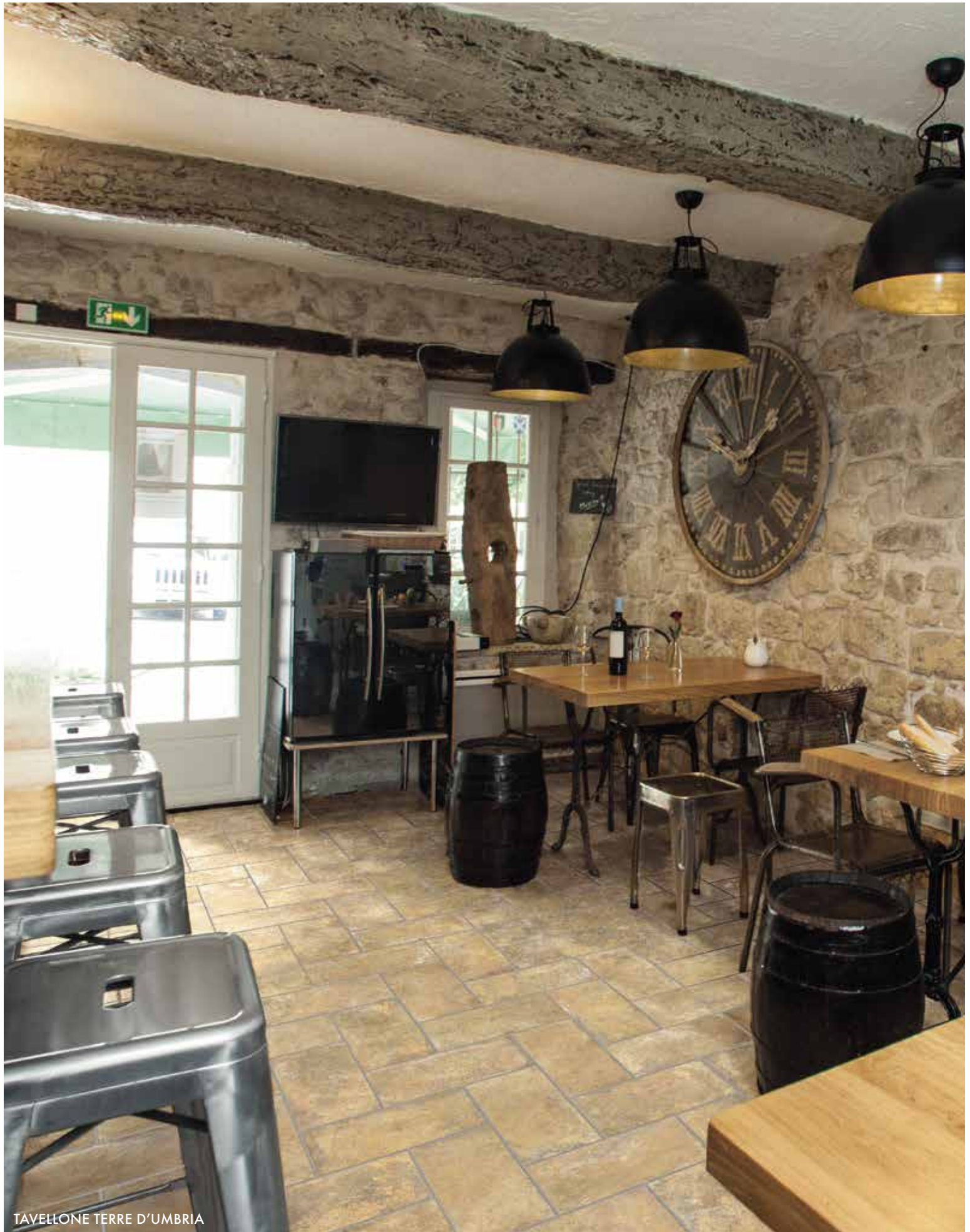


Conforme According to
UNI EN 14411 - G Bla



NOTE NOTES

I colori e le caratteristiche estetiche dei materiali illustrati nel presente catalogo sono da ritenersi puramente indicativi. Colours and optical features of the materials illustrated in this catalogue are to be regarded as mere indications.



TAVELLONE TERRE D'UMBRIA

TAVELLONE IN/OUT TERRE D'UMBRIA



TVN002/16 ■

Tavellone Terre d'Umbria IN

15,3x31 cm R9

6"x12"

17

TVN012/16 ■

Tavellone Terre d'Umbria OUT

15,3x31 cm R11

6"x12"

17



TAVELLONE IN/OUT VECCHIA FIRENZE



TVN001/16 ■

Tavellone Vecchia Firenze IN

15,3x31 cm R9

6"x12"

17

TVN011/16 ■

Tavellone Vecchia Firenze OUT

15,3x31 cm R11

6"x12"

17



TAVELLONE IN/OUT ANTICA ROMA

160

TVN003/16 ■

Tavellone Antica Roma IN

15,3x31 cm R9

6"x12"

17

TVN013/16 ■

Tavellone Antica Roma OUT

15,3x31 cm R11

6"x12"

17



TAVELLONE ANTICA ROMA

TAVELLONE IN/OUT



TAVELLONE TERRE D'UMBRIA



TAVELLONE VECCHIA FIRENZE

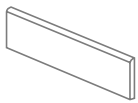
TAVELLONE IN/OUT



TAVELLONE ANTICA ROMA

ESTERNI

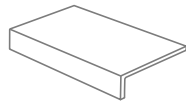
pezzi speciali special pieces



Battiscopa 7,5x31

46

TVN022/35 ■ Tavellone Terre d'Umbria
TVN021/35 ■ Tavellone Vecchia Firenze
TVN023/35 ■ Tavellone Antica Roma



Terminale a Elle Monolitico 15x4x30 *

8

TVN032/31 ■ Tavellone Terre d'Umbria
TVN031/31 ■ Tavellone Vecchia Firenze
TVN033/31 ■ Tavellone Antica Roma

NOTE NOTES

* È **OBBLIGATORIO** posare il Terminale a Elle Monolitico **SFALSATO** essendo di dimensione diversa rispetto alle piastrelle. Trattasi di materiale coordinato quindi la tonalità è abbinabile al fondo. It is **MANDATORY** to lay Terminale a Elle Monolitico **STAGGERED** (not following same joint) due to the difference in dimension between tiles and special pieces. The material is coordinated, so the shade can match to the floor.

PESI E MISURE WEIGHT AND SIZES / POIDS ET MESURES / GEWICHTE UND VERPACKUNGEN

dimensioni sizes dimensions abmessungen	spessore thickness épaisseur stärke	pz/collo pcs/box pc/boite stk/ktn	mq/collo sqm/box m/boite qm/ktn	kg/collo kg/box kg/boite kg/ktn	colli/europal box/europal boites/europal ktn/europal	mq/europal sqm/europal m/europal qm/europal	kg/europal kg/europal kg/europal kg/europal
15,3x31	9 mm	17	0,806	13,17	85	68,51	1140
Battiscopa 7,5x31	9 mm	46	14,26 ml/collo	19,60			
Terminale a Elle 15x4x30	8,5 mm	8	2,40 ml/collo	8,20			