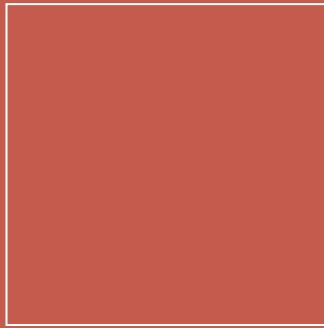


# Tecnici / Massivi

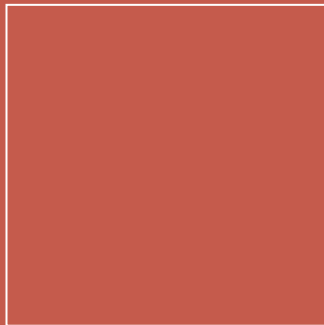
V2 HD



**NATURALE NATURAL BRUT**  
30,5x30,5 12"x12"

SPESSORE / Thickness

≅ **12** mm / 0.47"



**NATURALE NATURAL BRUT OUT**  
30,5x30,5 12"x12"





# Sale e Pepe

gres porcellanato fine a tutta massa  
full body porcelain stoneware / grès cérame fin pleine masse

Tecnici / Massivi



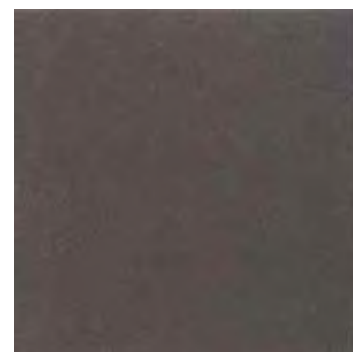
SG0009 € 19,60 mq ■  
Sale e Pepe Brown 30,5x30,5 15



SG0007 € 18,40 mq ■  
Sale e Pepe Beige 30,5x30,5 15  
303422 ≙ 12mm / 0.47" € 34,00 mq ■  
Sale e Pepe Brown OUT  
30,5x30,5 SP. 12 mm 9



SG0006 € 18,40 mq ■  
Sale e Pepe Silver 30,5x30,5 15  
303423 ≙ 12mm / 0.47" € 36,00 mq ■  
Sale e Pepe Silver OUT  
30,5x30,5 SP. 12 mm 9



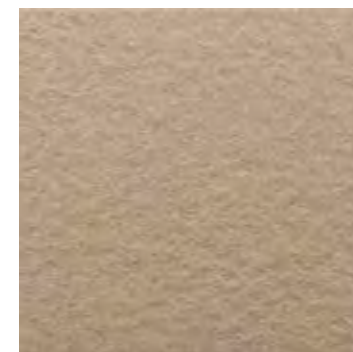
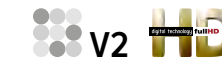
SG0008 € 19,60 mq ■  
Sale e Pepe Graphite 30,5x30,5 15  
303424 ≙ 12mm / 0.47" € 38,00 mq ■  
Sale e Pepe Graphite OUT  
30,5x30,5 SP. 12 mm 9

pesi e misure weight and sizes poids et mesures gewichte und verpackungen							
dimensioni sizes dimensions abmessungen	spessore thickness épaisseur stärke	pz/collo pcs/box pc/boite stk/ktn	mq/collo sqm/box m/boite qm/ktn	kg/collo kg/box kg/boite kg/ktn	colli/euopal box/euopal boites/euopal ktn/euopal	mq/euopal sqm/euopal m/euopal qm/euopal	kg/euopal kg/euopal kg/euopal kg/euopal
30,5x30,5 Sale e Pepe	7 mm	15	1,39	20,52	72	100,08	1500
30,5x30,5 Sale e Pepe OUT	12 mm	9	0,840	21,10	72	60,48	1545

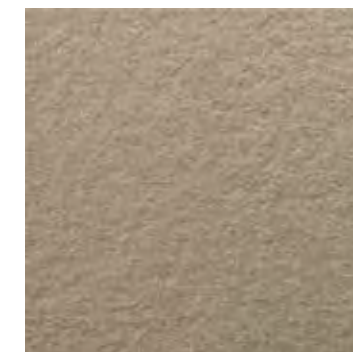
# Roccia

gres porcellanato fine a tutta massa  
full body porcelain stoneware / grès cérame fin pleine masse

Tecnici / Massivi



301743 € 21,80 mq ■  
Roccia Beige 30,5x30,5 13



301742 € 21,80 mq ■  
Roccia Silver 30,5x30,5 13



301744 € 23,80 mq ■  
Roccia Graphite 30,5x30,5 13



Roccia Silver

pesi e misure weight and sizes poids et mesures gewichte und verpackungen							
dimensioni sizes dimensions abmessungen	spessore thickness épaisseur stärke	pz/collo pcs/box pc/boite stk/ktn	mq/collo sqm/box m/boite qm/ktn	kg/collo kg/box kg/boite kg/ktn	colli/euopal box/euopal boites/euopal ktn/euopal	mq/euopal sqm/euopal m/euopal qm/euopal	kg/euopal kg/euopal kg/euopal kg/euopal
30,5x30,5 Roccia	8,5 mm	13	1,21	20,52	72	87,12	1464